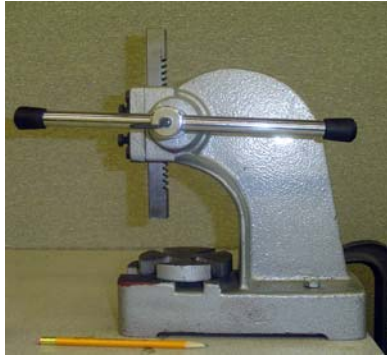
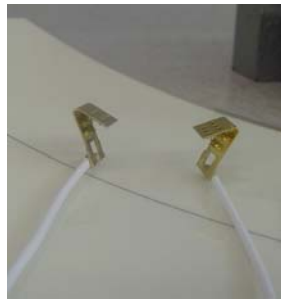


ETCO (FLL-ETCO-12) CONNECTIONS

ETCO connectors are simple to attach to a FLATLITE lamp using pliers and a press. Anything that applies smooth, even, parallel pressure of about 500 p.s.i. will work, such as a 1/2 ton Arbor Press.



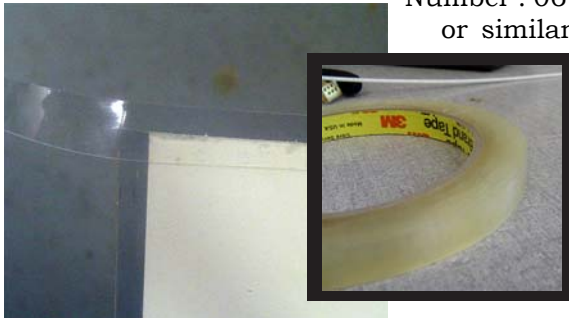
Arbor Press



Pair of ETCO connectors with 12" (30cm) leads (FLL-ETCO-12)

NOTE: Use one pair of connectors for every 5000 square inches (32K square cm) of lamp. For example, a 12,500 square inch (80K square cm) lamp should have 6 connectors: 3 on each side of the scribe line.

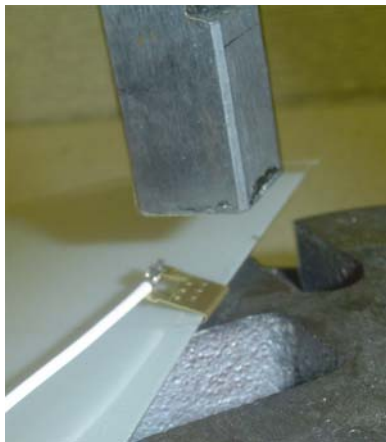
- 1) Seal the edge of lamp that is to receive the connectors (if not already sealed) using clear tape. E-Lite recommends Scotch® Premium Transparent Film Tape 600 Clear - 3M Part Number : 06941 or similar.



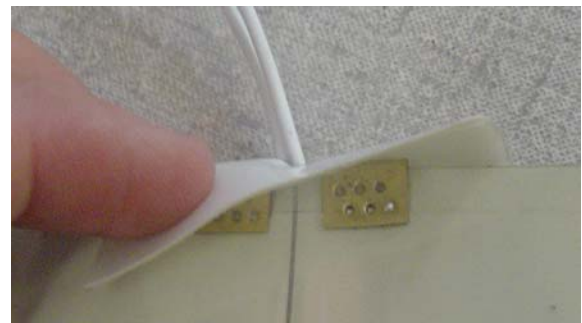
- 2) Attach one ETCO on either side of the scribe line and set them with standard pliers or vise-grips. The back of the ETCO (where leads are attached) should be on the back of the lamp.



- 3) Firmly affix the ETCO connectors to the lamp using 1/2 Ton Arbor Press or similar.



- 4) Insulate connectors using E-Lite connector sealing tape FLT-0075W-3 or similar. A shock hazard exists until the lamp edges are sealed and the connectors are insulated.



AMP (FLL-AMP-12) CONNECTIONS

Although special tools are available that are made to crimp AMP connectors to a FLATLITE lamp, they are not readily available and are expensive investments. A bench tool such as a 1/2 Ton Arbor Press can be used to apply AMP connectors to a FLATLITE lamp. AMP connectors should be used in certain specific applications such very thin lamp (0.25"/0.64cm wide or less), to maximize lit area, or to minimize profile.



1/2 Ton Arbor Press

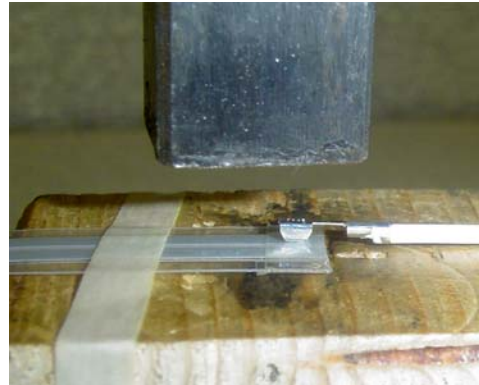


AMP connector with 12" (30cm) leads (FLL-AMP-12)

1) Seal the edge of lamp that is to receive the connectors (if not already sealed) using clear tape. E-Lite recommends Scotch® Premium Transparent Film Tape 600 Clear - 3M Part Number : 06941 or similar.

2) Place a block of soft wood below the press to allow for connector penetration through the lamp. Place the lamp face down under the press and secure.

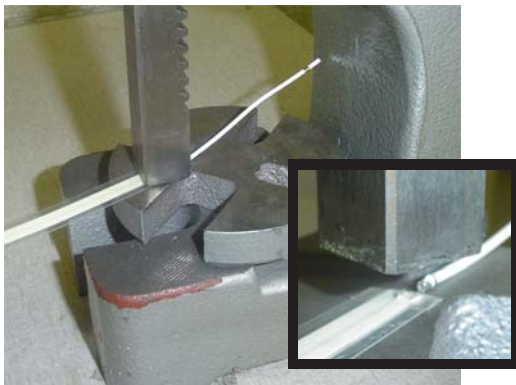
3) Carefully place AMP connector face down on top of the back of the lamp on one side of the scribe line.



4) Firmly crimp the connector through the lamp and into the block of wood using the Arbor Press.

5) Repeat steps 3&4 for second connector on other side of scribe line. Be careful to avoid shorts by making sure neither connector touches the scribe line or each other.

6) After removing block of wood, turn lamp over (face up) and firmly press front of AMP connectors using Arbor Press again. This will flatten the connector.



7) Insulate connectors using sealing tape (such as E-Lite FLT-0025W-3) or hot glue melt. A shock hazard exists until the lamp edges are sealed and the connectors are insulated.

